

User's Guide of Big Van Global



CONTENTS.

1. Introduction

2. Recommended operating environment

3. How to access

4. Login

< Home >

*Color formula

*Coarseness level

*Adoption info

*Parts color

*GCN code

*Specification/Movie

*History

*Setting change

1. Introduction

Big Van Global is an Internet-based search system for Kansai Paint's color formulations. It allows you to easily search Kansai Paint's extensive color information to support your color matching work.

2. Recommended operating environment

【 Recommended browsers on PC 】

Microsoft Edge、 Google Chrome

【 Recommended browsers on smartphone 】

Google Chrome、 Safari

【Note】

Depending on your browser version and settings, it may not be displayed properly.

3. How to access

① Access Kansai Paint's website.

https://www.kansai.com/ar_global/index.htmlz

The screenshot displays the Kansai Paint website interface. At the top left is the Kansai Paint logo. The main navigation menu includes 'About Us', 'News', 'Investor Relations', 'Sustainability', 'R&D Stages', and 'Products'. A secondary menu below it lists 'Decorative Coatings', 'Protective Coatings', 'Auto Refinish Coatings' (highlighted with a red circle), 'Automotive Coatings', and 'Industrial Coatings'. The main content area features a large image of a worker in a white protective suit and mask, with the text 'Automotive Refinish Coatings' overlaid. Below this image is a dark blue bar with links for 'Products Search', 'Training', 'Color Matching System', and 'Automotive Refinish Coatings TOP'. At the bottom of the page, there is a search bar with a magnifying glass icon and the text 'Products Search'. Below the search bar are three buttons: 'Big Van Global', 'Training', and 'Color Matching System'. A red arrow points from the 'Auto Refinish Coatings' menu item to the 'Big Van Global' button.

4. Login

Enter your member ID (8 digits) and password (4 digits) to login.

Members:

ID:

Password:

[Login](#)

Non-Members:

***Search only for standard formulations (CK00).**

[Product info](#) [Users manual](#)

[Note] A member ID and password will be issued by Kansai Paint for each member.

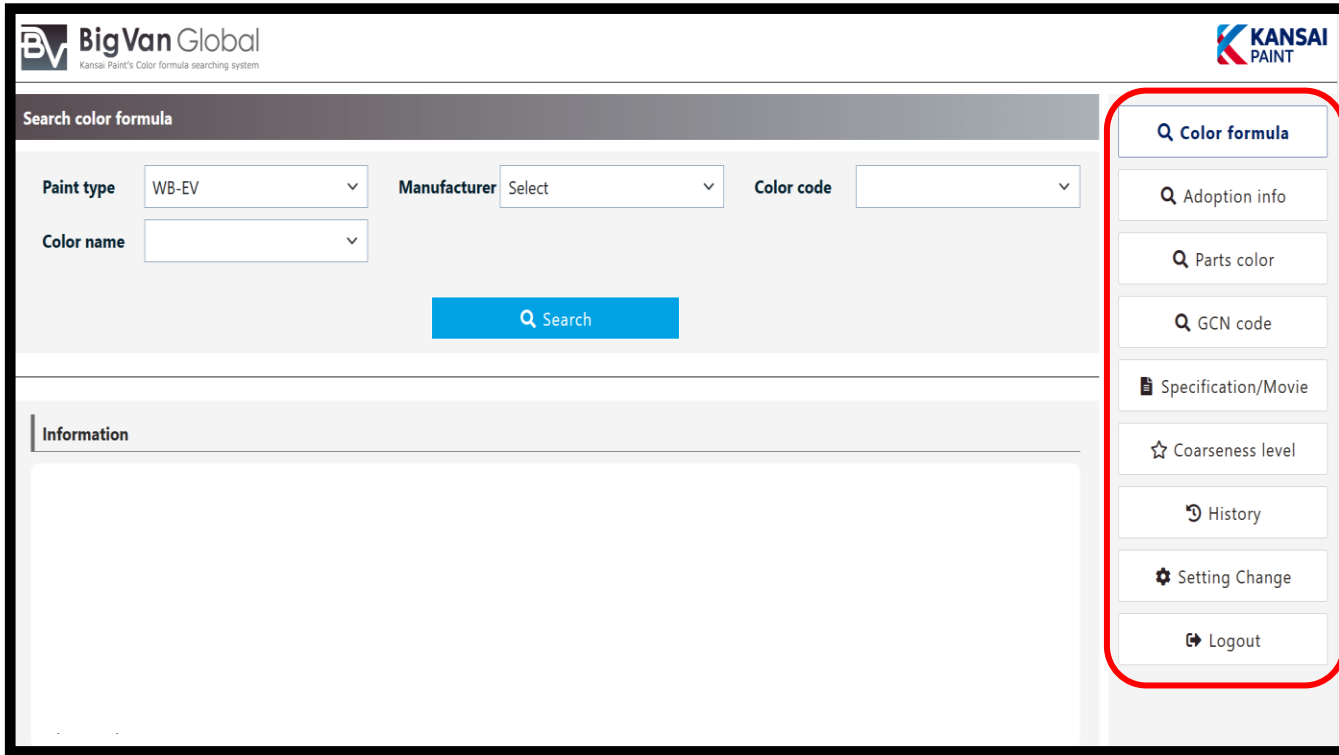
*The same member ID and password cannot be used to log in to multiple terminals at the same time.

* Transfer of member IDs and passwords to third parties is prohibited.

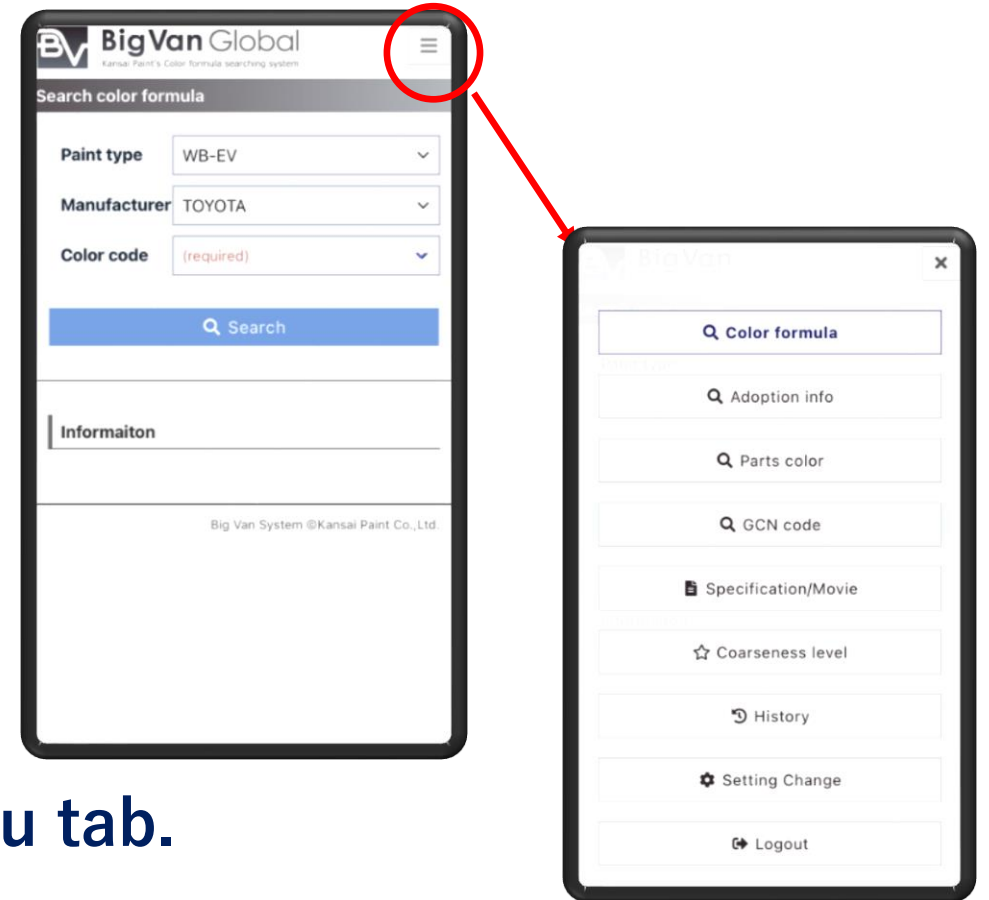
If unauthorized access is discovered, the service will be suspended.

Home

PC



Smartphone



Each function is available from the menu tab.

Color formula

Search color formula

Paint type: WB-EV Manufacturer: TOYOTA Color code: 1F7

Color name:

① Input

+ Image	Manufacturer	Color code
② Result	TOYOTA	③ Select 1F7
none	TOYOTA	1F7 N



TOYOTA 1F7

+ Color category	CK No.	Coarseness level
	CK000	2
④ select for CK	CK001	2
	CK002	2
	CK003	2
none	CK004	-



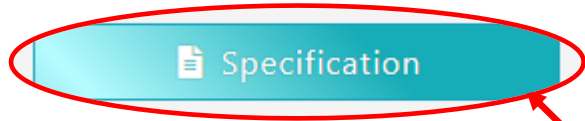
TOYOTA 1F7 SILVER MET WB-EV CK000

FC tinters: Use Not use Target amount: 100 Amount: g ml

⑤ Formula indication

Tinter No.	Tinter name	Amount
202	SUN METALLIC	56.80
123	METALLIC NEW MAKE WHITE	37.60
007	HYPER FLIP FLOP CONTROLLER	4.80
400	DEEP BLACK	0.20
664F	NABULA BLUE PC	0.60
		100

APP info Movie



Application specifications are available when this button shines.
*Normally, the catalog is displayed.

(coarseness level) in 5 ranks.

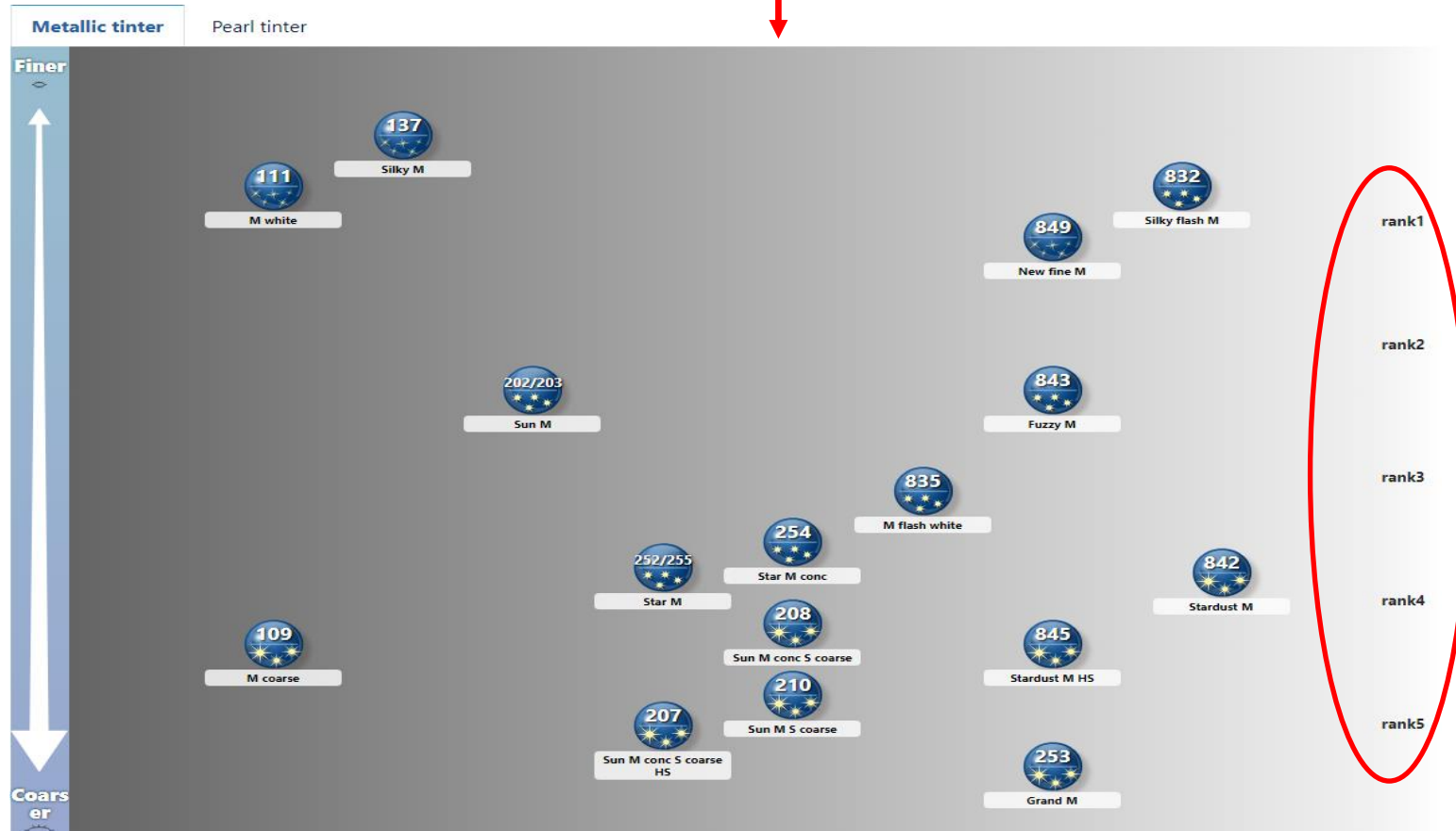
finer > 1 · 2 · 3 · 4 · 5 > coarser

Coarseness can be checked in the (Coarseness Level) menu.



Listed on the next page

Coarseness level



The coarseness rank can be checked from the metallic tinters map.

Adoption info

Search adoption information

Paint type ▼
Manufacturer ▼
Model name ▼

Model year ▼

🔍 Search

Model name	Model year	Color code	Special coatings
YARIS	2022	<u>040</u>	
YARIS	2022	<u>070</u>	
YARIS	2022	<u>089</u>	
YARIS	2022	<u>1F7</u>	
YARIS	2022	<u>1L0</u>	
YARIS	2022	<u>202</u>	TS

Color code can be searched by car model and year.

Parts color

Search parts color formula

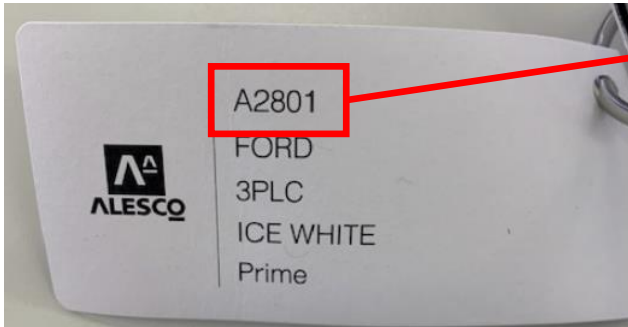
Paint type ▼
 Manufacturer ▼
 Color code ▼

Model name ▼
 Model year ▼

Model	Body color	Model year	Part	Color code
YARIS	SILVER MET	2021	BAMPER	<u>1F7</u>
YARIS	SILVER MET	2022	BAMPER	<u>1F7</u>
YARIS	SILVER MET	2020	BAMPER	<u>1F7</u>

You can search for a color code by car model and color code or by car model and year.

GCN code



Search GCN code

Paint type: WB-EV GCN code: A2801

Search

	Image	Manufacturer	Color code
+		GCN	A2801

You can search for formulas by GCN code.

Specification/Movie

★Go to contents

Specification/Movie

Specification Movie

Specification

+ WB-EV

+ PGHB

- PGHBHS

RETAN PG HYBRID ECO HS SYSTEM
TOYOTA 3U5 (Emotional red 2) Application specification (fade out)

Process	Making coat	Applied area	Test for application
Undercoat	● RETAN PG ECO BLENDING-IN-LEVELER 100		Apply 1~2 even coats over the area except where the color base will be applied.
Color base	● RETAN PG HYBRID ECO OMI Coat~Wt. Coat~Finish Coat (Remove mottling/Fade out) (Color Base) (Hardener for Color base) (PG ECO HS Thinner)		Apply evenly to get glossy appearance. Overcoat after flashing off. When overcoating the area make sure to increase the area of the fade out by applying several coats. Check after flash off, apply gradually on the fade out area of color-blended clear base (1)~(3). Clearly define number of coats. When overcoating color coat during color matching. Apply the first coat (1st time) to cover mottled area of color base. Clear coat: result of finish is stronger. less 10: Metallic particles will be prominent, finish is weaker.
	100 80 90-90 (A)		Do not shake gun. Make the application area gradually wider to hide border of fade out area. If necessary, add 10 to 20% of PG Eco Thinner to the color base (A) apply 2 coats. ● Clear coat: metallic particles will be prominent.
Undercoat	● RETAN PG ECO BLENDING-IN-LEVELER 100		Apply 1~2 even coats over the area except where color-blended clear base will be applied.
Color-blended clear base (Color base) (Color clear)	● RETAN PG HYBRID ECO 10 Color base to apply in fade out area (A) (B)		Apply 1~2 coats, slightly wider than the border of color base. Apply 1~2 coats to achieve semi-glossy appearance by means of finish coat application method. Clear distance should be 5cm more than when applying wet coat. ● Adjust air pressure (0.10 - 0.15 MPa) to avoid metallic particles being prominent. Do not shake gun. Make the application area gradually wider to hide border of fade out area. ● Color-blended clear base: Up to 2 coats. By applying more than 2 coats, border area will become darker. less than 2 coats: metallic particles will be prominent.
	10 90		
Undercoat	● RETAN PG ECO BLENDING-IN-LEVELER 100		Apply 1~2 coats over the area except where color clear coat will be applied.
Color clear	● RETAN PG HYBRID ECO OF finish coat (fade out) (Color clear base) (PG ECO HS Thinner)		Clearly after application of color-blended clear base has flashed off. Clearly using same technique as the color base wet coat. Overcoat after flash off, apply gradually on the fade out area of color-blended clear base (1)~(3). Clearly define number of coats. When overcoating color coat during color matching. Apply the first coat (1st time) to cover mottled area of color base. Clear coat: result of finish is stronger. less 10: Metallic particles will be prominent, finish is weaker.
	100 90-90 (B)		
Setting	Air drying (10 touch dry) ● Clear coat	● 20°C x 10min	

● POINT ① Do not scatter much color based mist (spread slowly). ② The color-blended clear base application does not increase the number of sprayings (up to 2 times). ③ Make coating thickness of color clear uniform.
● Product specifications may be revised without notice as necessary.

AUTO REFINISH TECHNICAL GUIDE

© 2019 Kansai Paint Co.,Ltd. All right reserved.

日本語版をご利用の方はこちらへどうぞ

- RETAN WB ECO EV
- Panel repair(solid color)
 - Fade out repair(solid color)
 - Panel repair (metallic color)
 - Fade out repair(metallic color)
 - Panel repair(3 coat pearl)
 - Fade out repair(3 coat pearl)

Finish coat (2nd coat)

You can see the special coat specifications.

*Some specifications are displayed in Japanese.
English version of them are under preparation.

Technical movies are available for reference.

History

History					
Date	Manufacturer	Color code	CK	Paint type	
2023/09/05	TOYOTA	<u>1F7</u>	CK000	WB-EV	
2023/09/05	TOYOTA	<u>3T7</u>	CK000	WB-EV	
2023/09/04	TOYOTA	<u>070</u>	CK000	WB-EV	
2023/09/04	TOYOTA	<u>040</u>	CK126	WB-EV	
2023/09/04	TOYOTA	<u>3T7</u>	CK002	WB-EV	
2023/09/04	CITROEN	<u>ECN</u>	CK000	PGHB	
2023/09/04	TOYOTA	<u>1F7</u>	CK000	WB-EV	
2023/09/04	TOYOTA	<u>1F7</u>	CK000	WB-EV	
2023/09/04	TOYOTA	<u>1F7</u>	CK000	WB-EV	
2023/09/01	TOYOTA	<u>3T5</u>	CK001	WB-EV	

The last 10 search histories are saved.

Setting Change

Default configuration

Paint type
WB-EV
PGHB
PGHBHS
FLT+E
PG80
S-EZ
CARDEA

Manufacturer

You can choose default settings for paint type and manufacturer.